



**TONLY**

Add : NO.2339, Fengchan Road, Fengdong New District, Xi'an City, Shaanxi Prov, China  
Sales Tel : +86-29-38001214      Service Tel : +86-29-33687710, 4006-863-853  
Website : <https://www.tonlyoverseas.com>

Local contact

**TLE105**  
pure electric  
off-road dump truck



## TLE105 pure electric off-road dump truck

- It adopts TONLY TL875/TL885 chassis, which has the largest No.1 market inventory. The chassis is mature and reliable, and has strong applicability. Equipped with the industry's advanced EIC system, the quality is stable and the performance is reliable.
- Pure electric drive, low noise, zero emission, green environmental protection.
- Full hydraulic steering system and emergency steering system, more light, reliable and safe.
- Heavy-duty downhill energy recovery can save costs by 70-95% compared with fuel trucks.
- It adopts lithium iron phosphate battery, which has high charging power, long cruising range and large energy recovery space.



# TLE105

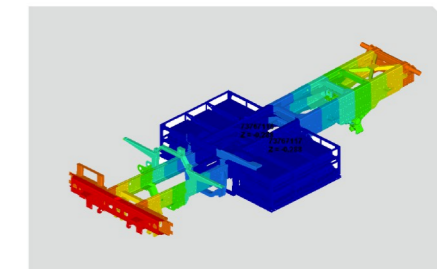
### 01 Cab

- Fourth generation cab based industry standard, obtain the FOPS&ROPS certificate;
- Forward-leaning windshield, better vision, prevent falling objects;
- Backwards opening door, convenient after collision out of danger;
- Through beam + bumper + anti-collision beam structure, safe and more effective.



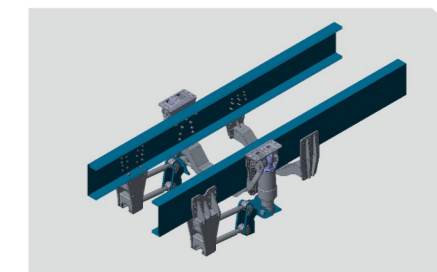
### 02 Main frame

- The unique three-layer plate of chassis with flexible frame in the industry. Large load capacity, strong impact resistance and long service life.



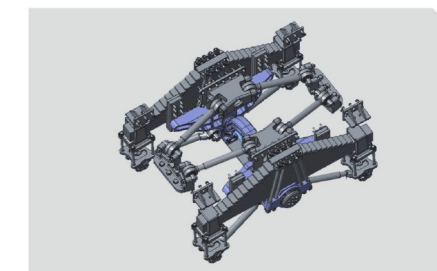
### 03 Front suspension

- Hydro-pneumatic suspension, ring beam type structure, professional adjustment, meet both empty and full loading conditions, high reliability and comfort.



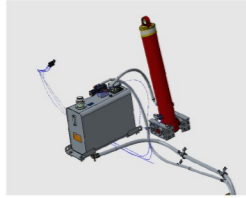
### 04 Rear suspension

- Leaf spring + balanced suspension + reverse splayed thrust rod structure increases the lateral stability of the truck, improves the stress of the leaf spring and improves the reliability of the suspension system.



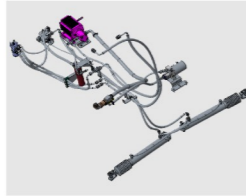
### 05 Lifting system

- HYVA mining cylinders are high-quality and highly adaptable; unique safety protection functions ensure the safety of drivers and trucks.



### 07 Steering system

- The specially developed full hydraulic steering system is matched with the optimal electric steering pump for fast response; the optimized design of the steering hydraulic cylinder ensures the reliability of the steering system and the ease of operation and sensitivity.



### 08 Power battery system

- CATL lithium iron phosphate fast charge battery, short charging time, liquid cooling and thermal management system, has good consistency and long cycle life.



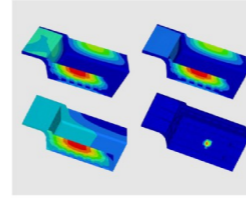
### 11 Electric drive assembly

- Equipped with a high-efficiency dual-motor drive system specially designed for mines, integrated with Fast pneumatic AMT shift control, with strong drive capability, good reliability and applicability.



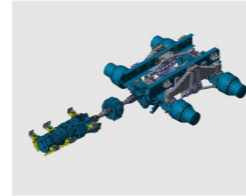
### 06 Cargo body

- Strengthen beams + reinforced frame structure with light weight, strong rigidity, impact resistance, high wear resistance, and small dynamic load deformation.



### 08 Braking system

- With the support of the integrated four-circuit braking system, motor feedback braking and eddy current braking, the braking performance is stronger and the safety performance is higher.



### 10 Battery thermal management system

- The water-cooled battery thermal management system with multiple working modes, can operate under different ambient temperatures to ensure the safety and stability of the battery.



### 12 Electric drive control system

- Special integrated controller for mining trucks, with highly integrated multiple functions. High power density, strong overload capacity, strong environmental adaptability, long design life, and have IP67 protection level.



Overall parameters	Model	TLE105
	Brand	Tonly
	Drive mode	6×4
	GVW (t)	110
	Rated payload (t)	70
	Kerb weight (t)	40
	Dimensions (mm)	9984×3750×4250 (reference)
	Wheelbase (mm)	4275+1750
	Wheel track (mm)	2760/2630
	Minimum ground clearance (mm)	375
	Minimum turning radius (m)	11.4
	Maximum angle of bucket lift (°)	50
	Loading height (mm)	3840
	Braking distance (m)	17
	Maximum climbing degree (%)	35
Maximum speed (km/h)	45	
Drive motor	Model	EM430-600
	Manufacturer / Country	Fast/China
	Rated power (kw)	430
Transmission	Model	4E300
	Manufacturer / Country	Fast/China
	Transmission type	AMT
Axle	Manufacturer / Country	Hande/China
	Load/T	25+40+40
Tires / Rims	Tire Model	16.00R25
	Rim size	11.0-25

Container	Base plate material/thickness (mm)	16
	Rear plate material/thickness (mm)	10
	Front plate material/thickness (mm)	10
	Side plate material/thickness (mm)	10
	Container volume (m <sup>3</sup> )	40
Steering System	Model	Fully hydraulic steering
	Manufacturer / Country	Zhenjiang Hydraulics/China
Lifting system	Manufacturer / Country	HYVA/China
	Container lift time (s)	<35
	Container descent time (s)	<30
Weight distribution	Empty load	
	Front axle (kg)	13447
	Rear axle (kg)	26553
	Total weight (kg)	40000
	Loaded	
	Front axle (kg)	28483
	Rear axle (kg)	81517
Total weight (kg)	110000	

